

## PEXY



1 COMAP guarantee mark

### Description

PEXY slide fittings are available for a wide range of PEX pipes, from 12 to 32mm.

#### Product features

- Slide fittings in brass from 12 to 32mm.

### Benefits

- Slide fittings are easy to use and quicker than other traditional solutions.
- Non-demountable – suitable for all applications.
- Reliable and safe.

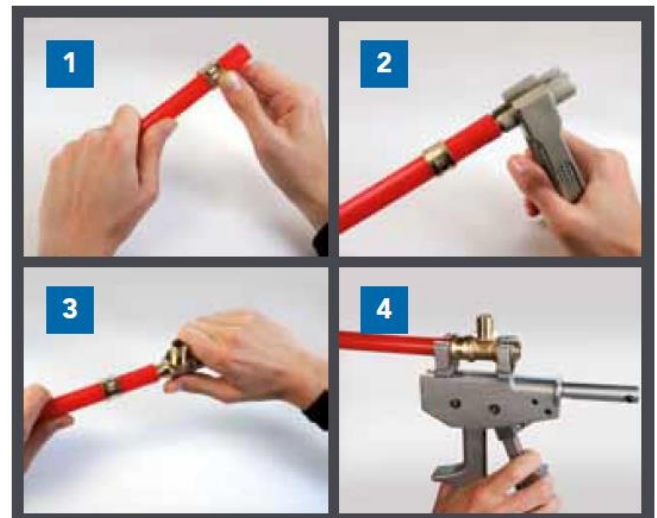
### Applications

The PEXY range is non-demountable. It is suitable for apparent or embedded applications and can be used in new installations or renovations. It should only be used with PEX pipes from Comap.

Chilled water applications: 5°C/6 bar  
Heating water applications: 80°C/6 bar  
Sanitary water applications: 70°C/6 bar  
Can be used with 50% water and 50% glycol

### Installation

- 1 Cut the pipe and slide the ring onto it.
- 2 Widen the pipe, using the correct tool.
- 3 Insert the fitting into the pipe.
- 4 Choose the appropriate jaws and slide the ring against the fitting.





PEX pipes must follow the dimensions shown in the table below.

	PEXY					
External Ø (mm)	12	16	20	25	32	
Thickness (mm)	1.1	1.5	1.9	2.3	2.9	3
Internal Ø (mm)	9.8	13	16.2	20.4	26.2	26

## Warranty & Certifications

*Certifications:*



PEXY fittings are free from material or workmanship defects for a 10 years period as from the date of sale.

This warranty is subject to conditions. To have the details of our warranty conditions please ask your Comap representative.