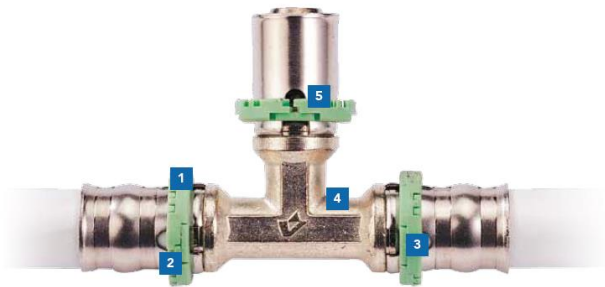




**SKINPress and SKINPress PPSU**



- 1 VISU-CONTROL®**  
Visual and tactile indicator. Application identification by colour. Ensures proper positioning of the jaws.
- 2 Patented O-ring (Only on SKINPress PPSU)**  
Identification by colour (black-EPDM). Patented O-ring indicates during pressure tests if a fitting is not crimped. Specific profile to avoid damage to the O-ring and prevent it from moving during connection.
- 3 Direct view of the pipe**  
Window for viewing the position of the pipe.
- 4 Tinning of the brass**  
Avoids the risks of corrosion in embedded systems.
- 5 Dielectric protection**  
The VISU-CONTROL® collar provides dielectric protection between the aluminium core of the pipe and the brass.

**Applications**

**SKINPress and SKINPress PPSU applications**

Application	Description	Operating temperature	System operating pressure
<b>Drinking water</b>	For drinking, hot and cold water systems.	+5°C to +95°C	10 bar
<b>Heating and cooling</b>	For heating systems, up to the pressure values indicated.	-10°C to +95°C	10 bar
<b>Rainwater</b>	For rainwater systems in buildings, up to the pressure values indicated.	-10°C to +95°C	10 bar
<b>Compressed air</b>	For compressed air systems for oil-free systems (with an oil filter fitted in front of the system).	-10°C to +70°C	10 bar

**Description**

Standard fittings for water and central heating applications are provided with EPDM O-rings. The type of O-ring to be used depends on the application and the medium.

SKINPress PPSU fittings are supplied with a patented O-ring designed to indicate any un-pressed fittings. This feature ensures that un-pressed connections will leak water from the O-ring during pressure tests (or pressure will drop if air is used for pressure testing). This simplifies the detection of un-pressed fittings.

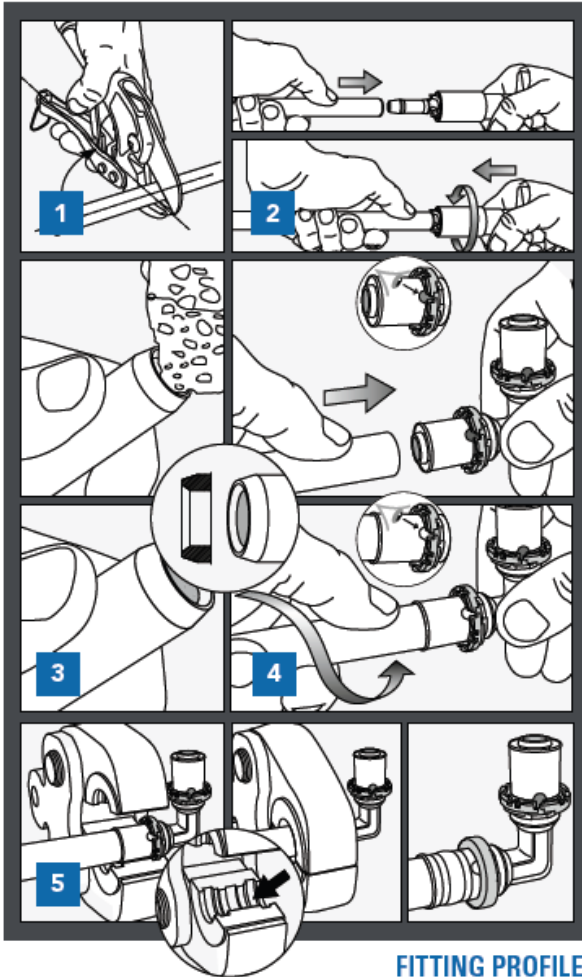
**Benefits**

- The press system is fast, economical, versatile and safe.
- VISU-CONTROL ring – the first connection with immediate crimping proof that you can see and touch.
- SKINPress design – protects the O-ring during installation.
- Perfect positioning of the jaw – the crimping tool is properly positioned thanks to the VISU-CONTROL ring.
- Protective caps for large diameters (40, 50 and 63mm) to prevent dirt penetrating the fittings.
- A check window ensures effective connection





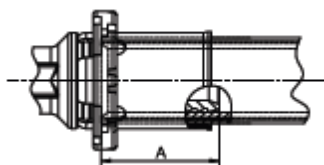
**Installation**



**FITTING PROFILE:  
TH (THL FOR 32MM)**

**1. CUT**

Cut the pipe with a pipe cutter. Position the cutter at a 90° angle to the pipe. Don't forget to consider the length of the pipe inside the fitting (dimension 'A') in your calculations.



Pipe diameter (mm)	14	16	18	20	26	32	40	50	63
A (m)	22.5	22.5	22.15	22.15	23.15	23.15	23.15	40.00	40.00

**2. CALIBRATE**

Use a Comap calibration tool to return the pipe to its cylindrical shape.

**3. DEBURR**

Remove burrs and visually check that the edges of the pipes are clean and bevelled to prevent any damage to the O-ring inside the fitting. Check that the O-ring is properly placed on the fitting.

**4. ASSEMBLE**

Insert the pipe into the SKINPress fitting up to the marked insertion depth by rotating slightly and pushing in an axial direction at the same time.

**5. PRESS**

Before starting to press, the press jaws and slings must be checked for dirt. Make sure that you use the correct press jaw and units and that these parts correspond to the fittings used.

**Warranty & Certifications**

Certifications:



SKINPress fittings are free from material or workmanship defects for a 10 years period as from the date of sale.

This warranty is subject to conditions. To have the details of our warranty conditions please ask your Comap representative.

