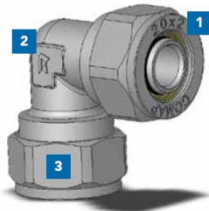




Compression fittings



- 1 EPDM O-ring (TurboSKIN)
- 2 'A' mark – a Comap quality guarantee
- 3 CW617N high quality brass (TurboSKIN)

Description

Our range includes fittings for a wide range of pipes:

- TurboSKIN compression fittings are suitable for Multilayer pipes.
- TurboPEX compression fittings are suitable for PEX pipes.
- SUDO Compression (Jevco) fittings are suitable for Copper pipes.

Product Features

- TurboSKIN
 - Compression fittings in brass from 14 to 32mm.
 - High quality EPDM O-ring.
- TurboPEX
 - Compression fittings in brass from 12 to 32mm.
- SUDO Compression (Jevco)
 - Compression fittings in gun metal from 10 to 108mm.
 - Compliant with EN 1254-1 standards.

Benefits

- EASY TO USE: No specific tools are needed - only regular spanners.
- VERSATILE: Suitable for all repairs.

Application

Compression fittings are demountable and, therefore, cannot be installed in structural elements (e.g. embedded in a wall or a floor).

Compression fittings can only be used for apparent applications or must be accessible. They are suitable for new installations or renovations.

They should only be used with Comap PEX, Comap Multilayer pipes and copper pipes compliant with EN 1057 (according to the fitting as shown in the table below).

Suitable applications

	Sanitary	Gas	Heating	Cooling	Underfloor heating
TurboSKIN	✓		✓	✓	✓
TurboPEX	✓		✓	✓	✓
Jevco	✓		✓	✓	

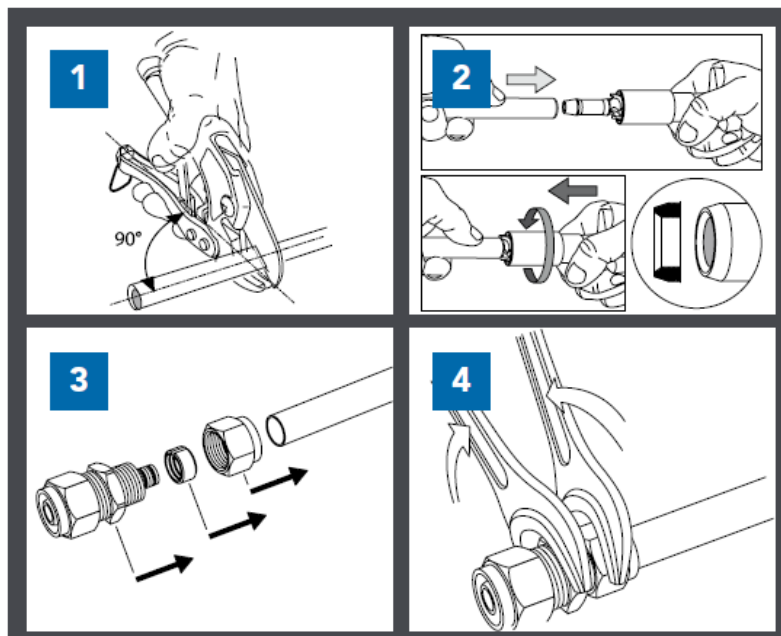
Applications

TurboSKIN	Chilled applications: 5°C/10 bar Heating applications: 95°C/10bar Sanitary applications: 95°C/10 bar Water or 50% water or 50% glycol
TurboPEX	Chilled applications: 5°C/6bar Heating applications: 80°C/6 bar Sanitary applications: 70°C/6 bar Water or 50% water or 50% glycol
Jevco	Chilled applications: 5°C/10 bar Heating applications: 110°C/6 bar Sanitary applications: 95°C/16 bar Water or 50% water or 50% glycol



Installation

- 1 Cut the pipe at a 90° angle using a pipe cutter.
- 2 TurboPEX/TurboSKIN: Calibrate the pipe using the Comap calibrating tool.
Jevco: Debur using sandpaper or a deburring tool.
- 3 Mount the nut and then the olive on the pipe.
Slide the fitting body into the pipe until the stop to ensure tightening.
- 4 Screw the nut, binding it tightly without twisting the pipe.



Technical features

	TurboPEX	TurboSKIN	SUDO Compression (Jevco)
Torque specification	Average torque advised: 20Nm < Ø 14mm 30Nm between Ø 14mm and Ø 26mm 40Nm > Ø 26mm	Average torque advised: 30Nm between Ø 14mm and Ø 26mm 40Nm > Ø 26mm	Average torque advised: 20Nm < ½" 30Nm between ½" and ¾" 40Nm > 1"

PEX and Multilayer pipes must comply with the dimensions given in the tables below.

TurboSKIN Multilayer pipe						
External Ø (mm)	14	16	18	20	26	32
Thickness (mm)	2	2	2	2	3	3
Internal Ø (mm)	10	12	14	16	20	26

TurboPEX PEX pipe																		
External Ø (mm)	12	14	15	16	16	16	18	18	20	20	20	22	25	25	28	32		
Thickness (mm)	1.1	2	2.5	1.5	2	2.2	2	2.5	1.9	2	2.8	3	2.3	3.5	3	2.9	3	
Internal Ø (mm)	9.8	10	10	13	12	11.6	14	13	16.2	16	14.4	16	20.4	18	22	26	26.2	

SUDO Compression (Jevco) must be used with copper pipe complying with EN 1057, August 2006.

Warranty & Certifications

Comap compression fittings have the following certifications :

Certifications:



Comap compression fittings are free from material or workmanship defects for a 10 years period as from the date of sale.

This warranty is subject to conditions. To have the details of our warranty conditions please ask your Comap representative.